



468—FISH 4"



512—LEAF



476—CLAW SHELL



470—AZTEC



467—FREE FORM



513—CLOVER LEAF



472—SHELL

MINIATURES - 1.00 EACH



458—ROUND ASH TRAY—3.00



T8—FISH ASH TRAY—1.50



473—6½" SHELL TRAY—1.50



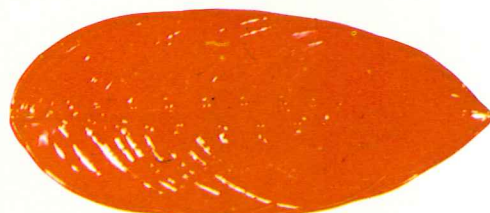
223—6" CLOVER LEAF TRAY—1.50



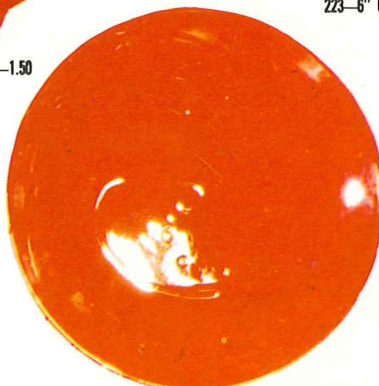
59—CANTEEN WITH LEATHER STRAP—2.50



826—6" TRIPOD BOWL—1.50



T11—17" PALM LEAF TRAY—7.50



820—15" CHOP PLATE—10.00



6U—BAKER FOR TWO —3.00



466—FREE FORM ASH TRAY—1.50



6VS—1½ QT. BAKER—4.00



T9—CLAW SHELL BOWL—2.25



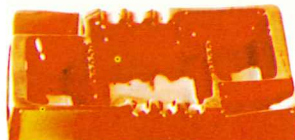
F34—RICE BOWL—3.00



469—SAFETY ASH TRAY—1.00



474—4" ROUND ASH TRAY—1.50



464—10½" SQUARE ASH TRAY—7.50



6V—2½ QT. BAKER—5.00



475—6" ROUND ASH TRAY—2.25



471—9" AZTEC ASH TRAY—3.00



4Y—SPOON HOLDER—1.50



301—CANDLE HOLDER—3.00 PR



236—PEDESTALLED BOWL 10½"—5.00



301—CANDLE HOLDER—3.00 PR.



20—BUD VASE—1.50



28—BUD VASE—1.50



226—11" LEAF BOWL—3.00



225—7" LEAF BOWL—1.50



F88—15" PALM LEAF BOWL—4.50

71H—9" AZTEC BOTTLE—2.25 WITH LID—3.00



F203—13½" ASH TRAY—4.50



7TR—CHEROKEE ALPHABET



6" TRIVETS—1.50

94TRC—CATTLE BRANDS



94TRH—HORSE SHOE



30—WITHOUT HANDLE—4.50



Frankoma's newest color "FLAME". It is available only in the pieces shown on this page. "Crackling" will occur in time, but this will not deter from its beauty. All pieces shown have dark brown glaze outside, "FLAME" inside, except bakers. Bakers have top of lid "FLAME" only.